

With Your Support We Will...

Provide funding to enable the smoothest transition possible from school services into adult service programming.

Provide funding to place individuals into residential settings that enable them to grow and live to their greatest potential.

Provide funding to allow individuals with complex disorders to receive a higher level of staffing that is required for acceptance into adult programming

Provide funding to help establish new residential and vocational training/day programming.



*"All Americans, regardless of disability, deserve a dignified life."¹
With the proper support these individuals can obtain this goal.*

¹ President Barack. H. Obama
Letter to Stephanie Kotheimer. 22 Oct. 2008.

The Illinois "waiting list" or Prioritization of Urgency of Need for Service list, as of September 08, 2009 had over 12,700 developmentally disabled individuals with unmet emergency or critical needs for services.

-Illinois Department of Human Services

"The present gap in Illinois between system capacity and service demand is large. There is a large cohort of people with developmental disabilities in Illinois who have especially urgent but unmet needs. As the Illinois service system is presently constituted, these individuals have little or no prospect of receiving services any time soon."

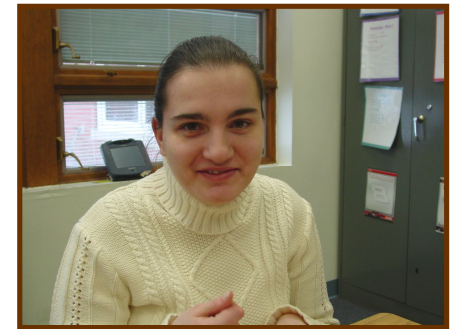
-2008 Gap Analysis: Services and Supports for People with Developmental Disabilities in Illinois.

Bridge2Hope is a 501 (c)(3) tax-exempt volunteer organization.

Bridge  Hope

17816 Bishop Road
Tinley Park, IL 60487
708-710-4321
www.Bridge2Hope.com

Bridging the Funding Gap for Young Adults with Developmental Disabilities



Bridge  Hope

www.Bridge2Hope.com

What We Do...

Bridge2Hope is an Illinois nonprofit charity established to provide a temporary funding source for day and/or residential programming for young adults with developmental disabilities. Providing the smoothest transition possible from school age services to adult services and raising awareness of the need to support these special individuals will be our primary goals.

Bridge2Hope understands the unique challenges that the parents and families of developmentally disabled adults have to face on a daily basis. Our goal is to help lessen the challenge of transitioning to adult services by temporarily providing the funding necessary to make that transition possible. Our hope is that everyone in need of adult programming will be able to access those services despite initially being denied Department of Human Services funding.



How do you tell your child that they cannot go to school anymore?

How do you tell your child that the bus that they look forward to seeing each day will not be coming to pick them up again?

How do you keep your child from losing skills that took years to develop because they are no longer engaged in a structured learning setting?

How do you avoid financial hardship when you have to leave your job to stay home and care for your child?



The families of young adults with developmental disabilities are confronted with these issues every day.

In 2008, Illinois ranked last in the United States in providing funding for Community Based Services. When a developmentally disabled individual becomes ineligible for state funded services after age 21 there is very limited money allocated to pay for adult service programs. Thousands of vulnerable disabled young adults sit at home every day and will wait years for funding for vital services.

There is no easy answer to this devastating problem. However, with your support we can help one person at a time live a more productive and meaningful life!

How Can I Help?

Make a tax-deductible donation!

I have enclosed a check
 Please charge my credit card
 Visa Discover MC AMEX

Card number

Exp. Date

Cardholder's Name

Signature

I can't make a monetary donation right now but please include me in your mailing list.

My Information:

Name

Address

City State Zip

Phone

Email

I'd like to volunteer my time or services to the Bridge2Hope cause. Please contact me.

Please make checks payable to Bridge2Hope. Detach this page and mail to:

Bridge2Hope
17816 Bishop Road
Tinley Park, IL 60487